

# All the Light We Cannot See

Author  
**Anthony Doerr**

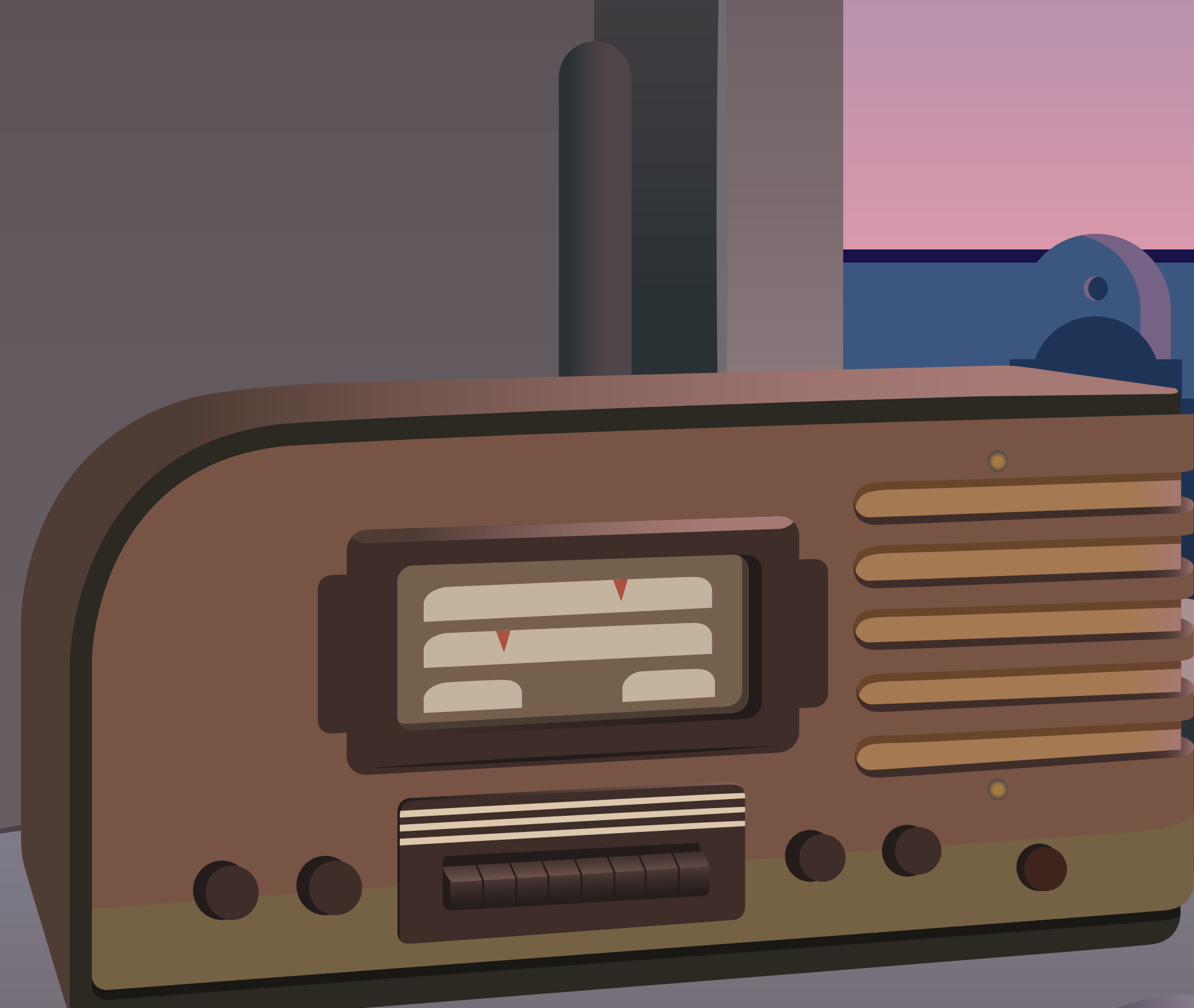
Year Published  
**2014**

Original Language  
**English**

## SYMBOLS

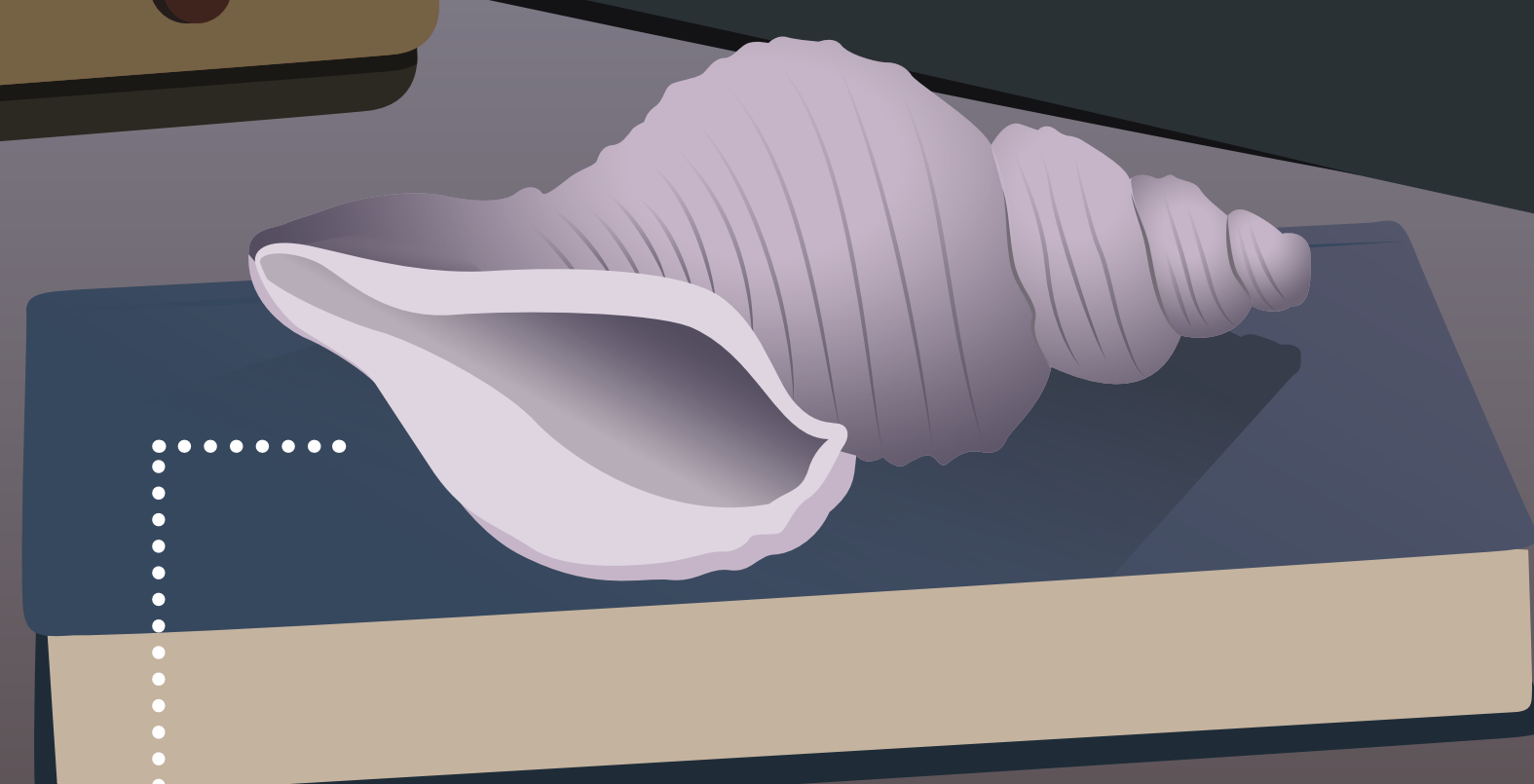
### Seeing Is Not Always Believing

Secrets are buried in puzzles while the battle of good versus evil rages across Europe during World War II. When blind Marie-Laure and radio mechanic Werner finally cross paths, empathy transcends enemy lines.



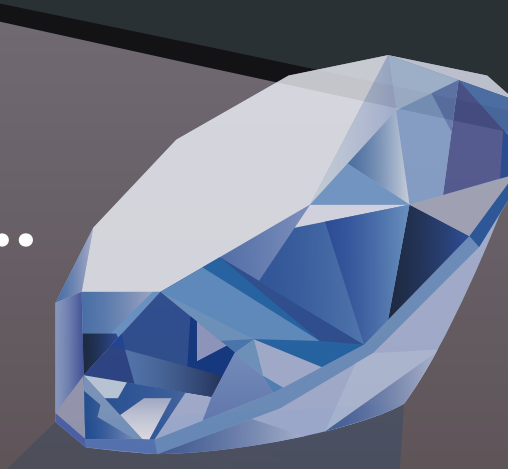
#### Radio

In peace or war, a radio indicates the importance of communication and connection.



#### Mollusks

The museum's mollusks symbolize Marie-Laure's tenacity and endurance.



#### Sea of Flames

A precious, sought-after jewel symbolizes the curse of greed.

## Author



**ANTHONY DOERR**  
BORN 1973

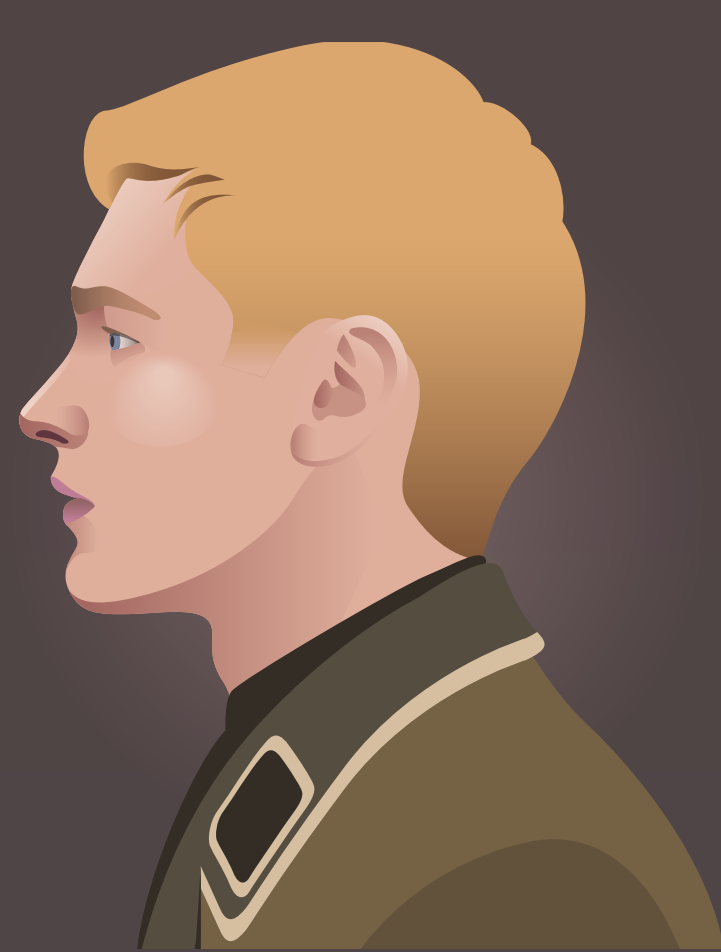
Born in Cleveland, Ohio, Doerr has spent much time abroad and uses settings in other countries in his short stories and novels. His best-selling novel, *All the Light We Cannot See*, received critical acclaim and won the 2015 Pulitzer Prize for Fiction.

## Main Characters



#### Marie-Laure LeBlanc

Resourceful, blind French girl with inner light; learns to find her own way through her father's guidance; joins the French resistance movement in WWII



#### Werner Pfennig

Intelligent, mechanically minded German orphan boy; dreams of being a scientist and joins the German army; saves himself by saving Marie-Laure



#### Daniel LeBlanc

Locksmith and loving father to Marie-Laure; hides Sea of Flames from Nazis and entrusts it to Marie-Laure when he is imprisoned

## Themes



#### Entrapment

Entrapment comes in many forms—physical, spiritual, or emotional.



#### Communication

Communication, such as that done by radio, enables connections.



#### Remembrance

Remembering preserves the past and links it to the present.

**O**pen your eyes ... and see what you can with them before they close forever.

*The Professor*, Part 1